

— BY M. RAFFAELLA GALLIANI

# A Comprehensive Guide to the Italian Language Citizenship Exam

RESOURCES TO GET FAMILIAR WITH THE TEST





# Contents

INTRODUCTION	3
GRAMMAR REQUIREMENTS	4
TEST CILS B1 CITTADINANZA	5
THE ANSWER SHEET	7
TEST CELI 2	8
THE ANSWER SHEET	10
WHAT TO EXPECT THE DAY OF THE TEST	11
HOW SPEAKITALY NYC CAN HELP YOU	12



## — INTRODUCTION

The B1 Certificate is now a required document to acquire Italian Citizenship through marriage. What is this certificate and how can I acquire it? The Italian B1 level language certificate is a document which shows Italian linguistic competency according to the Common European Framework of Reference for Languages, also known as CEFR. This certificate demonstrates to the Italian government that you will be able to function with day to day tasks in Italian as a potential Italian citizen. The recognized Language Certifications for the Italian Language are CILS B1 Cittadinanza (Università per stranieri di Siena), CELI 2 (Università per stranieri di Perugia), CERT.IT (Roma Tre) and PLIDA (Istituto Dante Alighieri). The most common ones in the USA are CILS B1 Cittadinanza and CELI 2. For both exams you need an intermediate Italian grammar and vocabulary level.

— GRAMMAR REQUIREMENTS

- Determinative and Indeterminative Articles
- Adjective Agreements
- Present Tense: Regular and Irregular
- Adjectives: Possessive, Demonstrative, Interrogative
- Adjectives and Pronouns Indefinite
- Prepositions: Simple and Compound
- Direct, Indirect, and Double Pronouns
- Comparison and Superlative
- Relative Pronouns: Che
- Passato Prossimo and Imperfetto
- Imperative (“tu” form)
- Conditional (“io” form)

## – TEST CILS B1 CITTADINANZA

Created by the University of Siena, attests to one's linguistic-communicative competence in Italian as their second language. This exam has been specially designed for all those applicants that need to obtain the Italian Certification for Citizenship. The CILS B1 level for Citizenship includes a reduced number of tasks compared to the regular CILS B1 exam.

**Total Length of the Test:** 1 hour and 50 min + Speaking

**Number of Parts in the Test:** 4 parts ( Comprehension & Grammar, Writing, Listening and Speaking)

**Comprehension and Grammar:** 40 minutes / Total Score: 12 Points

**Writing:** 40 minutes / Total Score: 12 Points

**Listening:** 30 minutes / Total Score: 12 Points

**Speaking:** 5 minutes / Total Score: 12 Points

**Grading:** The maximum score for this test is 48 (each part 12 points). You must score a minimum of 7 Points in each part

**Minimum score to pass:**  $\geq 28/48$

**Prep Books:** <https://www.speakitalynyc.com/prodotto/pronti-per-il-b1/>

**Comprehension and Grammar:** 40 minutes / **Total Score for this part:** 12 Points

**PROVA 1** [Total Score for this part: 6 Points]  
Choose true/false sentences in the reading

**Points are assigned as follow:**

**Point 1:** for each correct answer

**Point 0:** for each missed or incorrect answer

**PROVA 2:** [Total Score for this part: 6 Points]  
Multiple Choice with 6 items

**Points are assigned as follow:**

**Point 1:** for each correct answer

**Point 0:** for each missed or incorrect answer

**Writing:** 40 minutes / Total Score for this part: 12 Points

Write an essay (80 - 120 words). Candidates must choose between 2 options. Usually one must write a written note or email to ask for a service or information

**Points are assigned based on:**

a) communicative proficiency: up to 3

b) stylistic adequacy: up to 1

c) morphosyntactic adequacy: up to 4

d) lexicum adequacy and richness: up to 3

e) punctuation and spelling: up to 1

**Listening:** 30 minutes / **Total Score for this part:** 12 Points]

The two dialogues are played twice and candidates are given 1 minute to read the questions and 1 minute to respond to the questions

**PROVA 1:** [Total Score for this part: 6 Points]  
Multiple choice with 6 questions

**Points are assigned as follow:**

**Point 1:** for each correct answer

**Point 0:** for each missed or incorrect answer

**PROVA 2:** [Total Score for this part: 6 Points]  
Choose true/false sentences in the audio

**Points are assigned as follow:**

**Point 1:** for each correct answer

**Point 0:** for each missed or incorrect answer

**Speaking:** 5 minutes/ **Total Score for this part:** 12 Points

Topics: Daily life topics. Conversation always starts with a brief introduction. (You will be recorded.)

**Points are assigned as follow:**

a) communicative proficiency: up to 4

b) morphosyntactic adequacy: up to 4

c) lexicum adequacy and richness: up to 3

d) pronunciation and intonation: up to 1

**RESULTS:** Expected in about 45 business days.

You can check here:

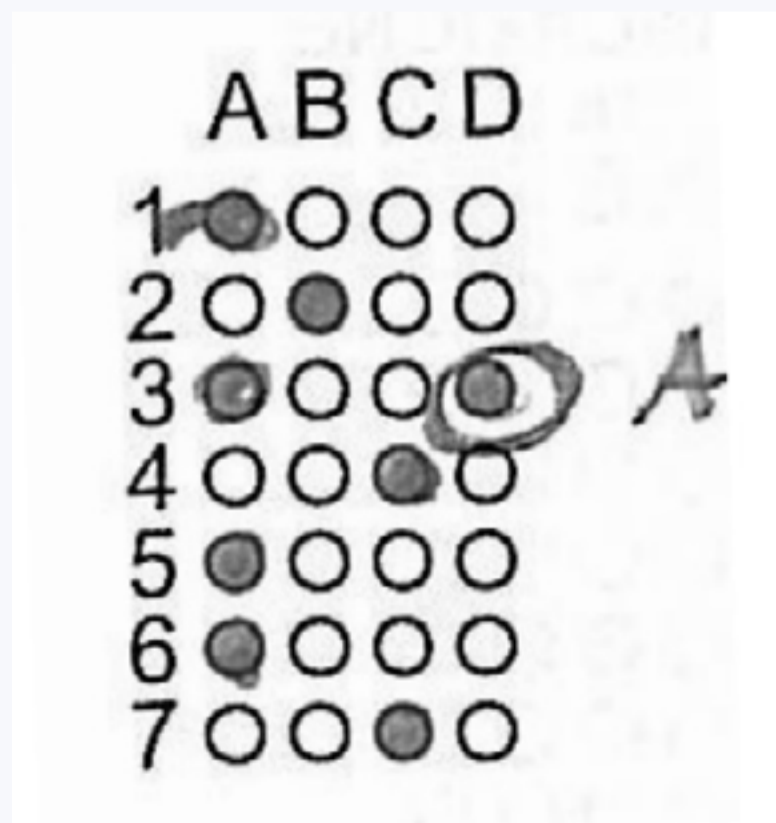
<https://online.unistrasi.it/riscils.asp>

You will need your matricola and DOB (DD/MM/YY)

– THE ANSWER SHEET/CILS B1 CITTADINANZA



1. Fill out the whole square but never crossed if incorrect
2. Make sure the written part follows the word limit given
3. Make sure to have time to copy your answers
4. Always check the number of the exercise
5. Buy a sample test to get familiar with the structure of the exam
6. If you make a mistake in filling out the answer sheet, you can circle the wrong choice, write the correct answer next to it, and then filling it out as shown



## — TEST CELI 2

The CELI 2 is an official Language Certificate issued by the University of Perugia, Italy, to demonstrate to the Italian government a B1 (intermediate) level of competence in the Italian Language. The CELI 2 test evaluates the student competencies in listening, reading, speaking, and writing Italian at an intermediate level, and will attest that you have mastered the basics of Italian and have now practical language skills for everyday use.

**Total Length of the Test:** 2.5 hours + Speaking

**Number of Parts in the Test:** 2 Parts/ 4 Sections (Comprehension, Writing, Listening and Speaking)

### **PART 1**

Comprehension (A) and Writing (B) - 120 min / Total Points: 40 per Section

Listening (C) - 30 min / Total Points: 40

### **PART 2**

Speaking - 10 min including preparation / Total Points: 40

**Passing score:** Minimum score to pass the test:  $\geq 94/160$

Part 1  $\geq 72/100$  It doesn't matter if you don't pass each section (A,B and C), what matters is the total score of the three.

Part 2  $\geq 22/40$

**Prep Books:** <https://www.speakitalynyc.com/prodotto/celi2-loescher/>

**PART 1:** Comprehension and Written Production: 120 minutes with 2 main sections which are Comprehension and Written Production

### Comprehension

**A1** Read the 7 texts and choose the correct answer

**Points are assigned as follow:**

**Point 2:** for each correct answer

**Point 0:** for each missed or incorrect answer

**A2** Read the text and choose the 10 sentences associated with it

**A3** Choose the correct word (5 words / 4 options)

**A4** Choose the correct word (10 words / 3 options)

**A5** Complete the 5 sentences

**Points are assigned as follow:**

**Point 1:** for each correct answer

**Point 0:** for each missed or incorrect answer

### Written Production

Consists of three short writing assignments: a fictional questionnaire to complete, and two short texts/emails to write (90-100 words).

**B1** Answer the 9 questions

**Points are assigned as follow:** 0 to 5 points (1/2 for each correct answer)

**B2** Reply to the posting

**Points are assigned as follow:** 0 to 15 points assigned following the competence scale

**B3** Write an email

**Points are assigned as follow:** 0 to 20 points assigned following the competence scale

### Listening

30 min with 4 parts

It lasts 20 minutes and consists of three short listening prompts. After listening to the audio prompts, you will complete multiple choice questionnaires about the audios.

**C1** - 4 questions

**C2** - 4 questions

**C3** (part 1)- 13 sentences of which candidate must chose the ones in the audio

**C3** (part 2)- 10 sentences of which candidate must chose the ones in the audio

**Points are assigned as follow:**

**Point 2:** for each correct answer

**Point 0:** for each missed or incorrect answer

**PART 2 :** Oral Production 10 min with a dialogue about a picture and a role play

Preparation 5 minutes and Speaking 10 minutes

You will be graded by your examiners

1. Briefly present yourself
2. Role play with the examiner based on a visual prompt (ex. complain at a restaurant, giving a piece of advice to a friend)
3. Describe a visual prompt – the examiner might ask you questions

**Points are assigned as follow:** 0 to 20 points assigned following the competence scale

**RESULTS:** Expected in about 3/4 months (depending on the volume of applicants)

You can check here: <https://www.cvcl.it/extranet/area-riservata-candidati>

You will need your matricola and DOB (DD/MM/YY)



— WHAT TO EXPECT THE DAY OF THE TEST

- Arrive on time
- Bring your ID
- You will be asked to turn off your phone
- No electronic devices allowed
- No dictionary allowed
- No whiteout
- Bring a black pen. Blue pens and pencils are not allowed
- It is a paper exam



— HOW SPEAKITALY NYC CAN HELP YOU



Speakitaly NYC can help in your search and retrieval of official documents both from the US and foreign countries, certified translations, legalization to apply in a consulate outside of the US and with Apostille from all States.

[WWW.SPEAKITALYNYC.COM/ITALIAN-DUAL-CITIZENSHIP-SERVICES/](http://WWW.SPEAKITALYNYC.COM/ITALIAN-DUAL-CITIZENSHIP-SERVICES/)

We can help you learn or review the Italian Language, and you can take the exam with us: we are both CILS and CELI official centers in New York City.

[WWW.SPEAKITALYNYC.COM/SERVICES/OFFICIAL-ITALIAN-TESTING-CLIQ/](http://WWW.SPEAKITALYNYC.COM/SERVICES/OFFICIAL-ITALIAN-TESTING-CLIQ/)

Speakitaly NYC have more than a decade of experience and we offer reliable, professional and quality services with a quick turnaround. Visit our website for more info at:

[WWW.SPEAKITALYNYC.COM/2010/03/15/EXAM-PREPARATION/](http://WWW.SPEAKITALYNYC.COM/2010/03/15/EXAM-PREPARATION/)



## **Speakitaly NYC**

**Manhattan:** 49 W 28th Street, FL. 3 - New York, NY 10001

**Brooklyn:** 110 York Street, FL. 5 - Brooklyn, NY 11201

[www.speakitalynyc.com](http://www.speakitalynyc.com)

[services@speakitalynyc.com](mailto:services@speakitalynyc.com)

(212) 603-9685



CONTENT BY M. RAFFAELLA GALLIANI

GRAPHIC DESIGN BY CHIARA BIANCHINI

© ALL RIGHTS RESERVED SPEAKITALY NYC 2022